



**Maximise  
*Value* with  
Pocket Doors**

**ENIGMA**<sup>®</sup>  
POCKET DOORS





# Contents

Enigma Pocket Doors

# The Pocket Door Movement™

INNOVATION BY SELO.

## Why Enigma?

Brand Promise	04
Core Values	06
Pocket Door Training	07
Why Pocket Doors?	08
Better by Design	10
London Showroom	36
Selo Academy	37
Halo Assist Support	38

## Pocket Door Kits

Standard Non Fire-Rated	14
EI30 Fire-Rated	16
Acoustic Rated	18
Power-assisted	24
Glazed Metal Leaf	26
Telescopic	28
Glass Leaf	30

## Technical Details

Kit Components	11
Frame/Trim Options	32
Door Leaf Options	33
Optional Enhancements	34

## Why Enigma?

Brand Promise

Since we founded in **2008**, we've consistently explored opportunities to **simplify bespoke** and **complex building** methods

Replacing them with dependable systems that deliver consistent, premium outcomes. We focused on specialist doors and that's still the core of our business now.

There are three key promises we keep to add value to our customers:



Scan QR to view more  
[enimapocketdoors.com/why-enigma](https://enimapocketdoors.com/why-enigma)

PROTECT

**Reduce every potential risk** to a minimum

**Unrivalled experience of large, complex projects and pioneering fire safety assurance.**

*We never walk away from a problem*

INNOVATE

We have a **legacy of industry-leading innovation**



Our continuous development drive has led us to the forefront of industry innovation.

*Our innovations become the industry norms*

SUPPORT

Give **detailed project assistance** at every stage



Proven process and industry expertise to ensure everything works out as intended.

*Support surrounding your project*

## Why Enigma?

Core Values

We own a set of **principles that we live by.** These ten core values run through the heart of our organisation

Whether it be the products and services we provide, the way we treat our staff or the way we run the business. We apply these values to everything that we do:



Scan QR to view more  
[enigmapocketdoors.com/who-we-are](https://enigmapocketdoors.com/who-we-are)

- #1 **Keep it simple**
- #2 **Tell things as they are, with respect**
- #3 **Embrace change**
- #4 **Positive 'will do' attitude**
- #5 **Work at pace, have fun**
- #6 **Never ever give up**
- #7 **Take ownership**
- #8 **One company, one team**
- #9 **Get the result**
- #10 **Learn continuously**

## Pocket Door Training

Complimentary Support



# CPD & Breakfast Morning Presentations:



### PRESENTATION

## Unveiling Design Brilliance

Aimed at Interior Designers, this presentation helps you to understand the potential design options of Enigma Pocket Doors through product samples.



### CPD

## Understanding Pocket Doors

Discover the range of unique design options and system enhancements that can be achieved using pocket doors. Product samples are used to demonstrate how the system works.



### PRESENTATION

## The Pocket Door Movement

Maximise space and value by making the switch from dated swing-doors to modern pocket doors; increase usable floor space, enhancing accessibility, and usability.

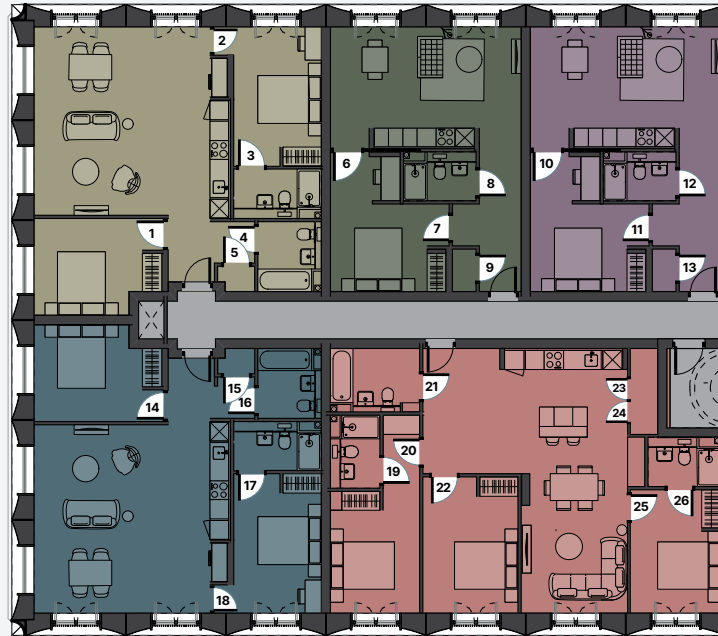


Scan QR to book  
Email [keelan@selo-uk.com](mailto:keelan@selo-uk.com)

## Why Pocket Doors?

System Benefits

# Maximise Value with Pocket Doors



Apartments with  
x26 Swing Doors

x26 Pocket Doors  
= **39m<sup>2</sup>**  
MORE USABLE  
**SPACE!**

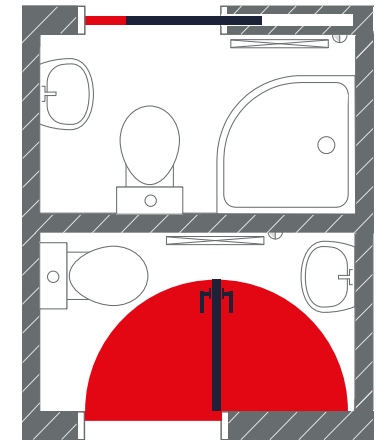


*Saves the space  
of a Bedroom  
& En-suite!*

## Optimise Space

Maximise the value of your development with pocket doors:

- ✓ Maximise your Floor Space
- ✓ Maximise the number of Apartments in your Development
- ✓ Make your Interior Design stand out from the crowd!



Swing Door vs. Pocket Door



Scan QR to view more  
[enigmapocketdoors.com/maximise-your-floor-space](https://enigmapocketdoors.com/maximise-your-floor-space)

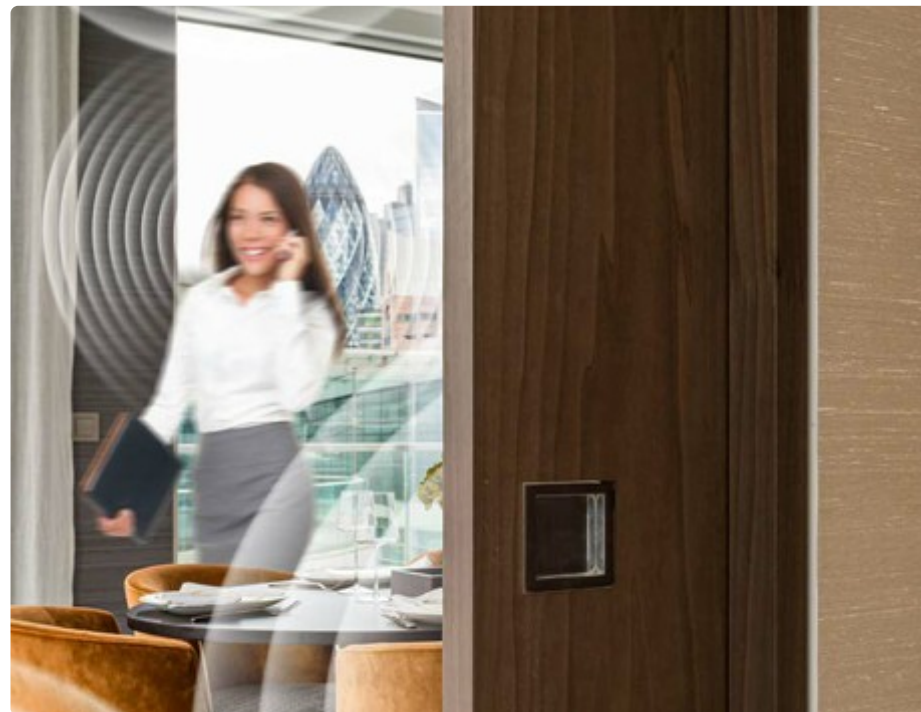




## Enhance **Design**

Concealed frame, shadow-gap or visible trim options are available in a range of flexible sizes. The simple, modular design allows for rapid installation. Adapt your design with optional features, such as:

- ✓ **Full-height**
- ✓ **Perpendicular Wall**
- ✓ **Bespoke Joinery Integration**
- ✓ **Offset Wall Thickness**



## Increase **Versatility**

Enhance your interiors with high performance pocket doors which increase versatility by offering acoustic reduction, power assistance or even as room dividers to extend space for entertaining.

- ✓ **Room Dividers**
- ✓ **Enhanced Disabled Access**
- ✓ **Power-assisted Opening**
- ✓ **Acoustic, Smoke and Fire-rated Options**

## Why Enigma Pocket Doors?

System Benefits

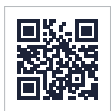
# Better by *Design*

### System Design

The pocket door must operate smoothly and consistently without hampering the user experience.

Quality hardware is paramount for a fluid, soft close, as opposed to a wobbly, squeaky rattle! The system must also be designed so that it is easy to install consistently, limiting performance issues which may arise from poor installation.

*See p12 for Pocket Door Kits*



Scan QR to view more  
[enigmapocketdoors.com/by-design](https://enigmapocketdoors.com/by-design)

#### 1 Trim Options

Concealed, or Visible Trim options to suit your interior design.

#### 2 Extruded Aluminum Construction

Durable construction giving maximum strength for the minimum wall thickness.

#### 3 100k Cycle-tested (under load)

Rigorously tested to withstand a lifetime of use for complete peace of mind.

#### 4 Up to 140kg Load

The super strong construction is capable of supporting solid timber doors up to 300lbs.

#### 5 Stud-like Construction

Adaptable to support bespoke joinery, perpendicular walls, off-set wall build-ups.

#### 6 Ribbed Surfaces

Ribbed extruded aluminum provides additional grip and stability when fixing the drywall.

#### 7 Design Support

We can help you achieve the best possible design and specification with our vast experience of different projects using different interfaces and materials.



# Why Enigma Pocket Doors?

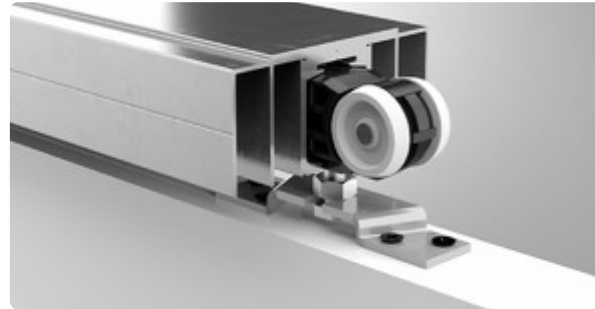
Kit Components

FSC Responsibly  
Sourced Timber



## Base Channel

The leading edge and intermediate jambs slot into the base channel of the Enigma pocket door system and are fixed into place. The door guide pin is used to keep the door in-line.



## Gear Sets

The standard sliding gear set is surface-mounted to the top of the sliding door and runs within the Head Channel. The gear sets are tested to EN 1527 1998 up to 100,000 cycles.



## Head Channel Junction

The leading edge and intermediate jambs are slotted into the head channel and fixed into place once plumb.



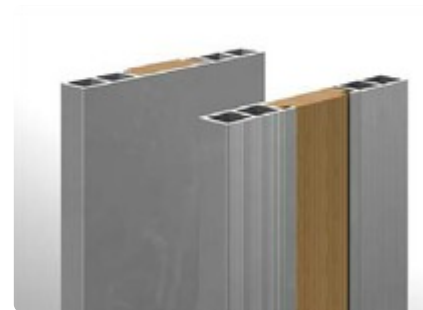
## Strike Jamb

The strike jamb features rubber batwing seals so when the door is closed the leaf sits within the sealed recess. The door frame is either concealed by jointing up to, or visible trims are added.



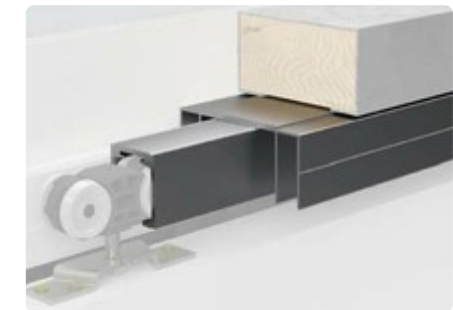
## Leading Edge Jamb

The leading edge jamb of the Enigma pocket door system is the leading support of the pocket which has a side flange for the plasterboard to butt up against.



## Intermediate Jamb

The intermediate jamb forms the rest of the pocket. The aluminum profile has a timber insert which provides extra strength and facilitates easy fixing.



## Head Channel

The head channel for the Enigma pocket doors is the same width as the stud, making it simple to accurately place and fix to the head stud.

## Pocket Door Kits

Range Overview

# The most *comprehensive* pocket door range

### Standard Non Fire Rated

The original pocket door system

14

### Glazed Metal Framed *Fenestra*®

Metal-framed pocket door leafs

26

### EI30 Fire Rated

30 minute fire rated

16

### Telescopic

Double-door spans within the footprint of single

28

### Acoustic Rated

Up to 30dB acoustic attenuation with added smoke rating

18

### Glass Leaf

Allow light to travel through rooms

30

### Power-assisted *Motus*®

Slide open and closed with powered pocket doors

24



## Design **Versatility**

Never compromise functionality or beautiful design, when it comes to using pocket doors.

We offer a comprehensive range of options including fire-rated, acoustic, and smoke-rated pocket doors, as well as concealed, shadow gap, or visible trim designs to empower, rather than constrain designers' creativity. Additionally, the inclusion of a self-supporting head can be utilised when the pocket door kit cannot be directly attached to the ceiling or floor slab.

*See p14 for Pocket Door Kits*



## Enhanced **Accessibility**

A contactless electromagnetic propulsion system silently opens and closes doors with minimal to no user handling required.

By eliminating the need for physical contact, it offers a hygienic and convenient solution, particularly in environments where cleanliness and ease of access are paramount such as healthcare facilities, commercial buildings, or residential settings. The advanced propulsion system ensures smooth and efficient door operation while enhancing overall user experience.

*See p24 for Power-assisted Pocket Doors*



## Rapid **Installation**

Installation is incredibly simple and fast with user-friendly instructions and straightforward assembly.

Even those with limited experience can easily complete the installation process in no time. For large quantity orders the pre-assembled kit can reduce errors and simplify scheduling for tradespeople. Pre-assembled pocket door kits are also popular for their on-site space-saving benefits and a factory-built quality assurance.

*See p34 for Pocket Door Enhancements*

## Pocket Door Kits

# Standard Non Fire Rated

The original pocket door kit has been refined for modern construction methods to maximise space and elevate design aesthetics where fire rating isn't necessary.

Premium components and cutting-edge innovation, promising an unparalleled experience. Commonly found in apartment buildings, they grace corridors leading to bathrooms and bedrooms, elevating spaces with their exceptional quality and design.

### Configurations

Designed to suit a range of opening sizes, simply cut-to-size to suit your exact opening.



Scan QR to view more  
[enigmapocketdoors.com/non-fire-rated](https://enigmapocketdoors.com/non-fire-rated)

Leaf Width	Leaf Height	Leaf(s)	Concealed Frame Kit	Shadow-Gap Kit	Visible Trim Kit
600mm to 926mm	Up to 2130mm	Single	SEL-PRT-10152	1 SEL-PRT-10206	2 SEL-PRT-10100
		Double	SEL-PRT-10170	1 SEL-PRT-10218	2 SEL-PRT-10124
	Up to 2850mm	Single	SEL-PRT-10155	1 SEL-PRT-10209	2 SEL-PRT-10103
		Double	SEL-PRT-10173	1 SEL-PRT-10221	2 SEL-PRT-10127
927mm to 1220mm	Up to 2130mm	Single	SEL-PRT-10153	1 SEL-PRT-10207	2 SEL-PRT-10101
		Double	SEL-PRT-10171	1 SEL-PRT-10219	2 SEL-PRT-10125
	Up to 2850mm	Single	SEL-PRT-10155	1 SEL-PRT-10210	2 SEL-PRT-10104
		Double	SEL-PRT-10174	1 SEL-PRT-10222	2 SEL-PRT-10128
1221mm to 1650mm	Up to 2130mm	Single	SEL-PRT-10154	1 SEL-PRT-10208	2 SEL-PRT-10102
		Double	SEL-PRT-10172	1 SEL-PRT-10220	2 SEL-PRT-10126
	Up to 2850mm	Single	SEL-PRT-10157	1 SEL-PRT-10211	2 SEL-PRT-10105
		Double	SEL-PRT-10175	1 SEL-PRT-10223	2 SEL-PRT-10129

No. of Plasterboard Layers Required

No. of Plasterboard Layers Required

No. of Plasterboard Layers Required

### Construction

Build-up is based on a 94mm stud, using 1 or 2 layers of 12.5mm plasterboard (see table), either side of the wall.

- 1 Concealed Frame
- 2 Shadow-Gap
- 3 Visible Trim
- 4 Strike Jamb
- 5 Head Channel
- 6 Gear Set
- 7 Door Leaf (options available)



## Performance

Sustainably sourced timber parts.  
System tested to over 100k cycles.  
Supports doors up to 140kg.



100k Cycle Load Tested



Supports up to 140kg Doors

## Door Leaf Configurations

Available as a single (opening from left or right) or double-leaf configurations to suit your specific requirements.



Single Leaf



Double Leaf

## Door Leaf Options

Solid timber core with hardwood lippings finished to your specification.

See p33



Laminated (Timber)



Painted (Timber)

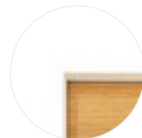


Veneered (Timber)

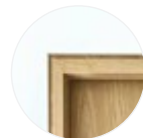
## Frame/Trim Options

Choose a trim to suit your individual interior design style.

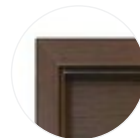
See p32



Concealed Frame



Shadow-Gap Frame



Visible Trim

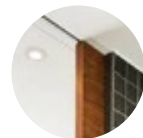
## Optional Enhancements

Customise your chosen pocket door system with a range of additional system options and enhancements to ease installation, optimise functionality and enhance the user experience.

See p34



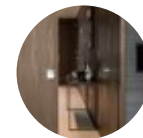
Pre-assembled Rapid Install



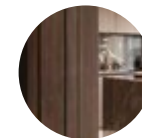
Full Height (Flush)



Self-supporting Head



Perpendicular Wall



Touch Latch



Flush Ironmongery Including Lock options



Soft Close/Open Dampener



Simultaneous Open Double-leaf only



## Pocket Door Kits

# EI30 Fire Rated

**Certified 30-minute fire rated kits for multi-story residential properties and entrances leading off the main stairwell for homeowners and designers alike.**

All frame options are provided to you pre-primed ready for on-site painting in your chosen finish and colour. Moreover, the frames can be constructed in differing species of hardwood timber and different finishes at your request.

### Configurations

Designed to suit a range of opening sizes, simply cut-to-size to suit your exact opening.



Scan QR to view more  
[enigmapocketdoors.com/EI30-fire-rated](https://enigmapocketdoors.com/EI30-fire-rated)

Leaf Width	Leaf Height	Leaf(s)	Concealed Frame Kit	Shadow-Gap Kit	Visible Trim Kit
600mm to 926mm	Up to 2130mm	Single	SEL-PRT-10158	2 SEL-PRT-10212	2 SEL-PRT-10106
		Double	SEL-PRT-10176	2 SEL-PRT-10224	2 SEL-PRT-10130
	Up to 2850mm	Single	SEL-PRT-10161	2 SEL-PRT-10215	2 SEL-PRT-10109
		Double	SEL-PRT-10178	2 SEL-PRT-10226	2 SEL-PRT-10132
927mm to 1220mm	Up to 2130mm	Single	SEL-PRT-10159	2 SEL-PRT-10213	2 SEL-PRT-10107
		Double	SEL-PRT-10177	2 SEL-PRT-10225	2 SEL-PRT-10131
	Up to 2850mm	Single	SEL-PRT-10162	2 SEL-PRT-10216	2 SEL-PRT-10110
		Double	SEL-PRT-10179 <sup>†</sup>	2 SEL-PRT-10227 <sup>†</sup>	2 SEL-PRT-10133 <sup>†</sup>
1221mm to 1500mm	Up to 2130mm	Single	SEL-PRT-10160	2 SEL-PRT-10214	2 SEL-PRT-10108
		Double	N/A	- N/A	- N/A
	Up to 2850mm	Single	SEL-PRT-10163 <sup>*</sup>	2 SEL-PRT-10217 <sup>*</sup>	2 SEL-PRT-10111 <sup>*</sup>
		Double	N/A	- N/A	- N/A

<sup>\*</sup>Max Width 1500mm / Max Height 2625mm <sup>†</sup>Max Width 1111mm / Max Height 2500mm

Visible Trim Kits are also available as double-boarded systems. Contact us to discuss your requirements.

### Construction

Build-up is based on a 94mm stud, using 1 or 2 layers of 12.5mm plasterboard (see table), either side of the wall.

- 1 Concealed Frame
- 2 Shadow-Gap
- 3 Visible Trim
- 4 Strike Jamb
- 5 Head Channel
- 6 Gear Set
- 7 Door Leaf (options available)
- 8 Intumescent Strips





## Performance

Sustainably sourced timber parts.  
System tested to over 100k cycles.  
Supports doors up to 140kg.



100k Cycle Load Tested



Supports up to 140kg Doors



Up to EI30 Fire Rated

## Door Leaf Configurations

Available as a single (opening from left or right) or double-leaf configurations to suit your specific requirements.



Single Leaf



Double Leaf

## Door Leaf Options

Solid timber core with hardwood lippings finished to your specification.

*See p33*



Laminated (Timber)



Painted (Timber)

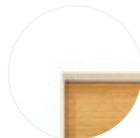


Veneered (Timber)

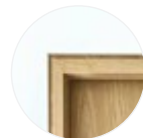
## Frame/Trim Options

Choose a trim to suit your individual interior design style.

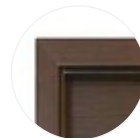
*See p32*



Concealed Frame



Shadow-Gap Frame



Visible Trim

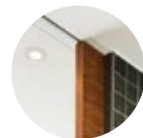
## Optional Enhancements

Customise your chosen pocket door system with a range of additional system options and enhancements to ease installation, optimise functionality and enhance the user experience.

*See p34*



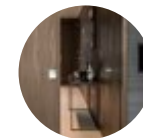
Pre-assembled Rapid Install



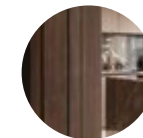
Full Height (Flush)



Self-supporting Head



Perpendicular Wall



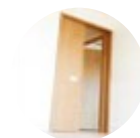
Touch Latch



Flush Ironmongery Including Lock options



Soft Close/Open Dampener



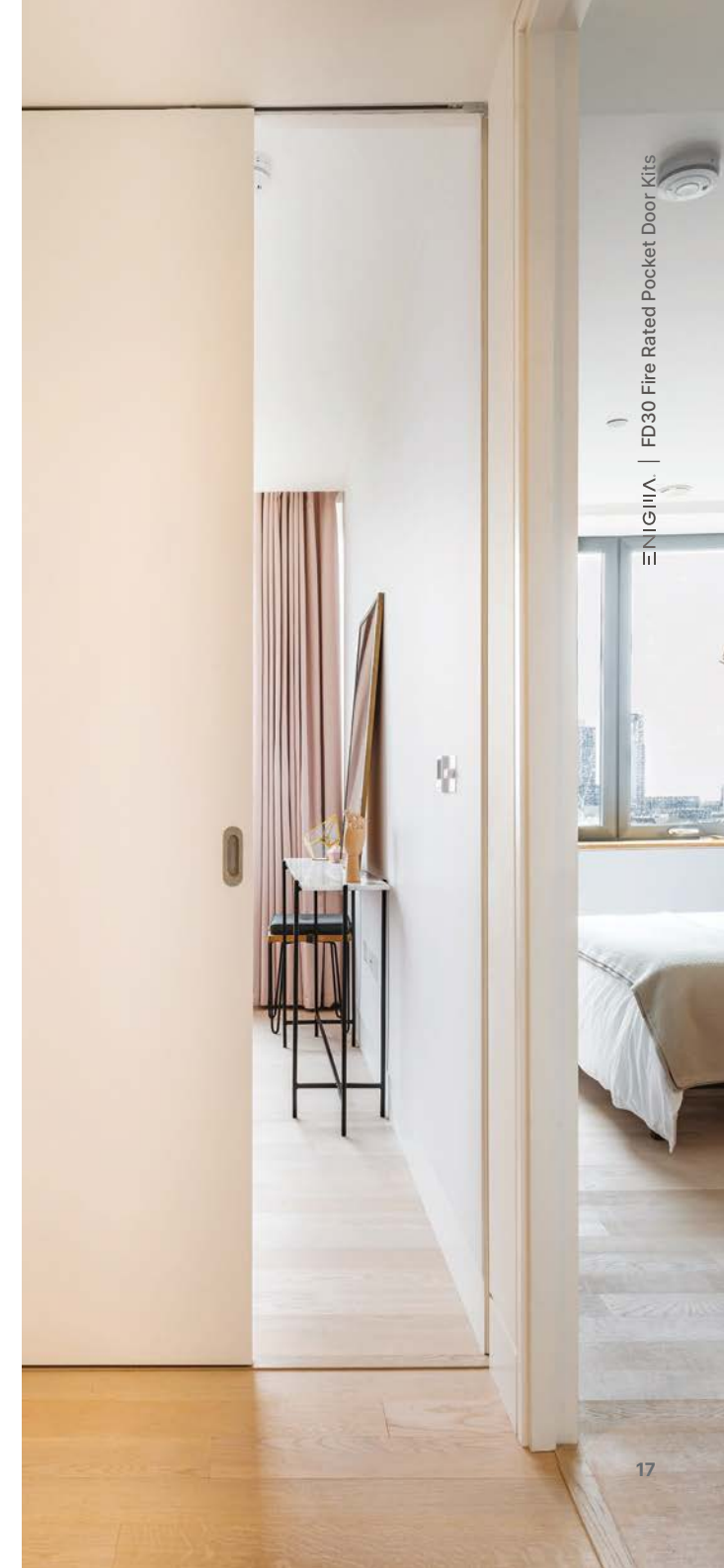
Self Closer Automatic Close



Simultaneous Open Double-leaf only



Power Assisted Motus®



## Pocket Door Kits

# Acoustic Rated

Reduce the transmission of sound, quickly and simply with EI30Sa acoustic rated sliding pocket doors, offering up to 30 minutes fire and smoke protection.

Within contemporary open-plan spaces, it's essential to have the ability to isolate sound when needed. Acoustic pocket doors are the perfect solution, allowing for the maximum amount of clear floor space whilst open, with the required reduction in sound when closed.



### Configurations

Designed to suit a range of opening sizes, simply cut-to-size to suit your exact opening.



Scan QR to view more  
[enigmapocketdoors.com/acoustic-rated](https://enigmapocketdoors.com/acoustic-rated)

Leaf Width	Leaf Height	Up to 28dB Visible Trim Kit			Up to 30dB Concealed Kit			Up to 30dB Shadow-Gap Kit			Up to 30dB Visible Trim Kit		
710mm to 800mm	Up to 2130mm	28dB Acoustic Attenuation	No. of Plasterboard Layers Required	1	30dB Acoustic Attenuation	No. of Plasterboard Layers Required	2	No. of Plasterboard Layers Required	2	No. of Plasterboard Layers Required	2	No. of Plasterboard Layers Required	2
	Up to 2850mm			SEL-PRT-10236			SEL-PRT-10264		SEL-PRT-10278		SEL-PRT-10250		
835mm to 925mm	Up to 2130mm			SEL-PRT-10243			SEL-PRT-10271		SEL-PRT-10285		SEL-PRT-10257		
	Up to 2850mm			SEL-PRT-10237			SEL-PRT-10265		SEL-PRT-10279		SEL-PRT-10251		
960mm to 1050mm	Up to 2130mm			SEL-PRT-10244			SEL-PRT-10272		SEL-PRT-10286		SEL-PRT-10258		
	Up to 2850mm			SEL-PRT-10238			SEL-PRT-10266		SEL-PRT-10280		SEL-PRT-10252		
1085mm to 1175mm	Up to 2130mm			SEL-PRT-10245			SEL-PRT-10273		SEL-PRT-10287		SEL-PRT-10259		
	Up to 2850mm			SEL-PRT-10239			SEL-PRT-10267		SEL-PRT-10281		SEL-PRT-10253		
1210mm to 1300mm	Up to 2130mm			SEL-PRT-10246			SEL-PRT-10274		SEL-PRT-10288		SEL-PRT-10260		
	Up to 2850mm			SEL-PRT-10240			SEL-PRT-10268		SEL-PRT-10282		SEL-PRT-10254		
1335mm to 1425mm	Up to 2130mm			SEL-PRT-10247			SEL-PRT-10275		SEL-PRT-10289		SEL-PRT-10261		
	Up to 2850mm			SEL-PRT-10241			SEL-PRT-10269		SEL-PRT-10283		SEL-PRT-10255		
1460mm to 1500mm	Up to 2130mm	SEL-PRT-10248	SEL-PRT-10276	SEL-PRT-10290	SEL-PRT-10262								
	Up to 2850mm	SEL-PRT-10242	SEL-PRT-10270	SEL-PRT-10284	SEL-PRT-10256								
		SEL-PRT-10249	SEL-PRT-10277	SEL-PRT-10291	SEL-PRT-10263								

## Performance

Sustainably sourced timber parts.  
System tested to over 100k cycles.  
Supports doors up to 140kg.



100k Cycle Load  
Tested



Supports up to  
140kg Doors



Up to E130Sa  
Fire Rated



Smoke Seals  
Included



28dB - 30dB  
Acoustic

## Door Leaf Configurations

Available as a single door leaf only  
(opening from left or right).



Single  
Leaf

## Door Leaf Options

Solid timber core with hardwood  
lippings finished to your specification.

*See p33*



Laminated  
(Timber)



Painted  
(Timber)

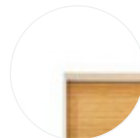


Veneered  
(Timber)

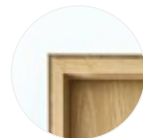
## Frame/Trim Options

Choose a trim to suit your individual  
interior design style.

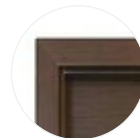
*See p32*



Concealed  
Frame



Shadow-Gap  
Frame



Visible  
Trim

## Optional Enhancements

Customise your chosen pocket door  
system with a range of additional  
system options and enhancements to  
ease installation, optimise functionality  
and enhance the user experience.

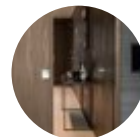
*See p34*



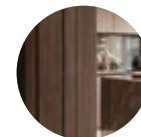
Pre-assembled  
Rapid Install



Self-supporting  
Head



Perpendicular  
Wall



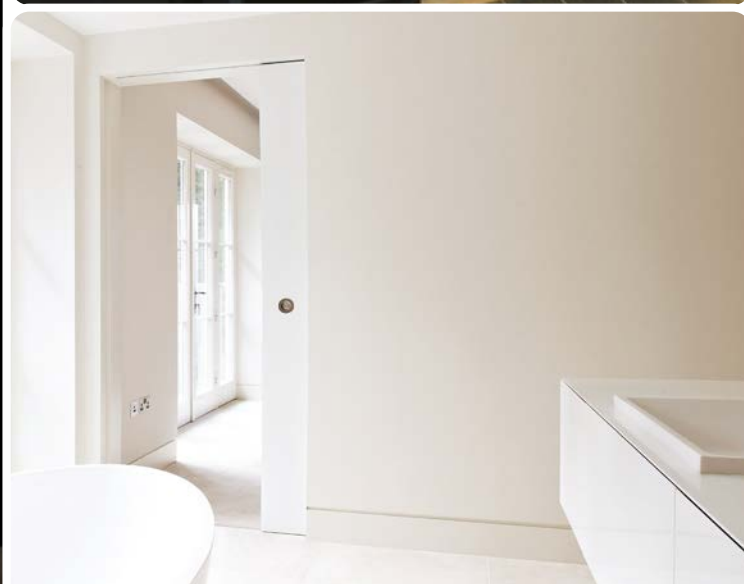
Touch  
Latch



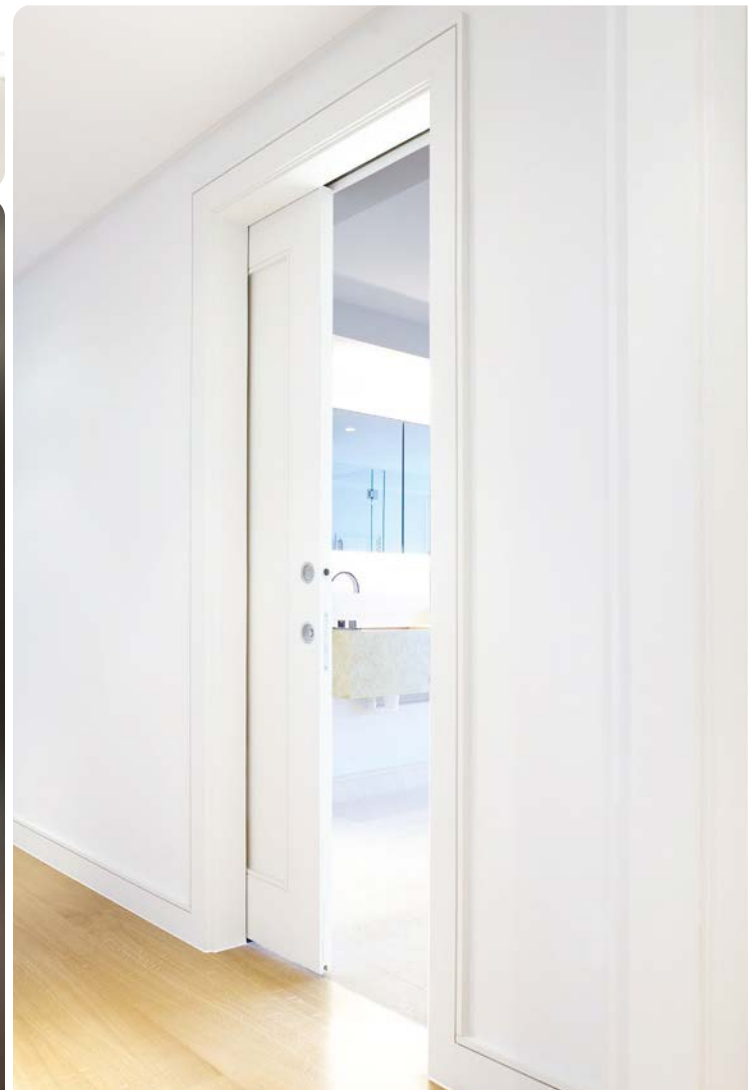
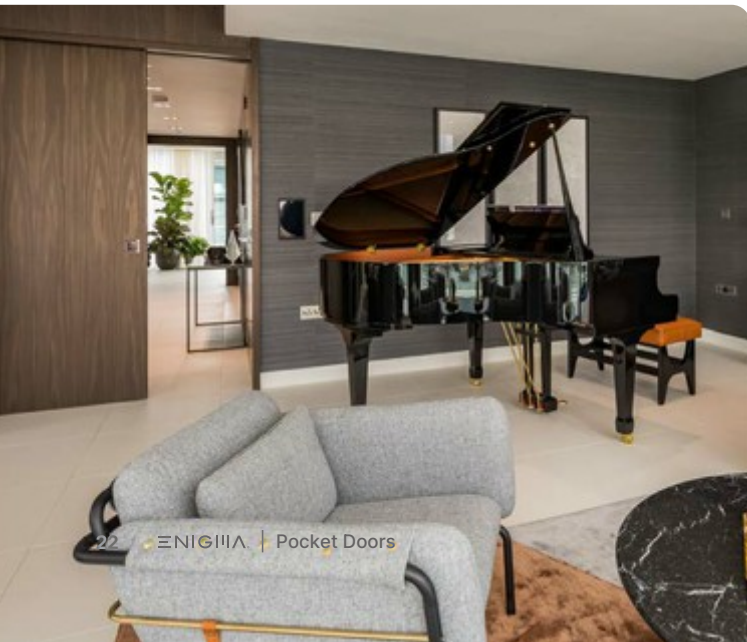
Flush Ironmongery\*  
Including Lock options

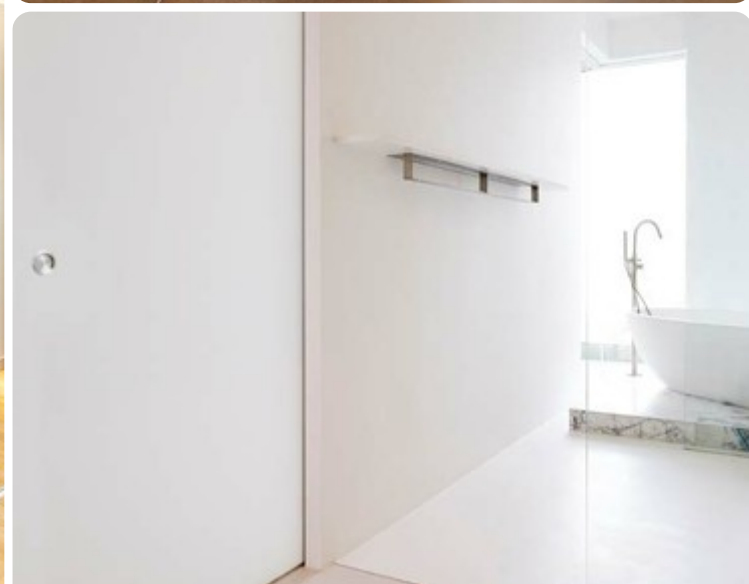
\*Handle shown is  
not fire rated











## Pocket Door Kits

# Power Assisted *Motus*<sup>®</sup>

Power-assisted pocket doors utilise a contactless electro magnetic propulsion system to silently open and close the door with no or minimal user handling.

The standard method to control the powered doors is by using 'nudge and go'; simply nudge the door open or closed and Motus will assist with the rest. An optional 'Touchless sensor' can be fitted to the wall, simply move your hand in front of the sensor to activate the door.



### Configurations

Designed to suit a range of opening sizes, simply cut-to-size to suit your exact opening.



Scan QR to view more  
[enigmapocketdoors.com/power-assisted](http://enigmapocketdoors.com/power-assisted)

Leaf Width	Leaf Height	Leaf(s)	NFR Concealed Kit		NFR Shadow-Gap Kit		NFR Visible Trim Kit		EI30 Concealed Kit		EI30 Shadow-Gap Kit		EI30 Visible Trim Kit	
875mm	Up to 2095mm	Single	SEL-PRT-10044	1	SEL-PRT-10078	2	SEL-PRT-10000	1	SEL-PRT-10050	2	SEL-PRT-10084	2	SEL-PRT-10006	1
		Double	SEL-PRT-10062	1	SEL-PRT-10090	2	SEL-PRT-10024	1	SEL-PRT-10068	2	SEL-PRT-10096	2	SEL-PRT-10030	1
	Up to 2815mm	Single	SEL-PRT-10047	1	SEL-PRT-10081	2	SEL-PRT-10003	1	SEL-PRT-10053	2	SEL-PRT-10087	2	SEL-PRT-10009	1
		Double	SEL-PRT-10065	1	SEL-PRT-10093	2	SEL-PRT-10027	1	SEL-PRT-10070	2	SEL-PRT-10098	2	SEL-PRT-10032	1
1000mm	Up to 2095mm	Single	SEL-PRT-10045	1	SEL-PRT-10079	2	SEL-PRT-10001	1	SEL-PRT-10051	2	SEL-PRT-10085	2	SEL-PRT-10007	1
		Double	SEL-PRT-10063	1	SEL-PRT-10091	2	SEL-PRT-10025	1	SEL-PRT-10069	2	SEL-PRT-10097	2	SEL-PRT-10031	1
	Up to 2815mm	Single	SEL-PRT-10048	1	SEL-PRT-10082	2	SEL-PRT-10004	1	SEL-PRT-10054	2	SEL-PRT-10088	2	SEL-PRT-10010	1
		Double	SEL-PRT-10066	1	SEL-PRT-10094	2	SEL-PRT-10028	1	SEL-PRT-10071 <sup>†</sup>	2	SEL-PRT-10099 <sup>†</sup>	2	SEL-PRT-10033 <sup>†</sup>	1
1125mm	Up to 2095mm	Single	SEL-PRT-10046	1	SEL-PRT-10080	2	SEL-PRT-10002	1	SEL-PRT-10052	2	SEL-PRT-10086	2	SEL-PRT-10008	1
		Double	SEL-PRT-10064	1	SEL-PRT-10092	2	SEL-PRT-10026	1	N/A	-	N/A	-	N/A	-
	Up to 2815mm	Single	SEL-PRT-10049	1	SEL-PRT-10083	2	SEL-PRT-10005	1	SEL-PRT-10055*	2	SEL-PRT-10089*	2	SEL-PRT-10011*	1
		Double	SEL-PRT-10067	1	SEL-PRT-10095	2	SEL-PRT-10029	1	N/A	-	N/A	-	N/A	-



## Performance

Sustainably sourced timber parts.  
System tested to over 100k cycles.  
Supports doors up to 140kg.



100k Cycle Load Tested



Supports up to 80kg Doors



Up to EI30 Fire Rated

## Door Leaf Configurations

Available as a single (opening from left or right) or double-leaf configurations with simulations opening as standard.



Single Leaf



Double Leaf

## Door Leaf Options

Solid timber core with hardwood lippings finished to your specification.

*See p33*



Laminated (Timber)



Painted (Timber)

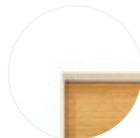


Veneered (Timber)

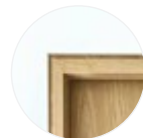
## Frame/Trim Options

Choose a trim to suit your individual interior design style.

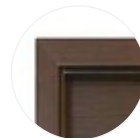
*See p32*



Concealed Frame



Shadow-Gap Frame

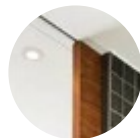


Visible Trim

## Optional Enhancements

Customise your chosen pocket door system with a range of additional system options and enhancements to ease installation, optimise functionality and enhance the user experience.

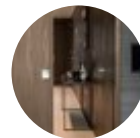
*See p34*



Full Height\* (Flush)



Self-supporting Head



Perpendicular Wall

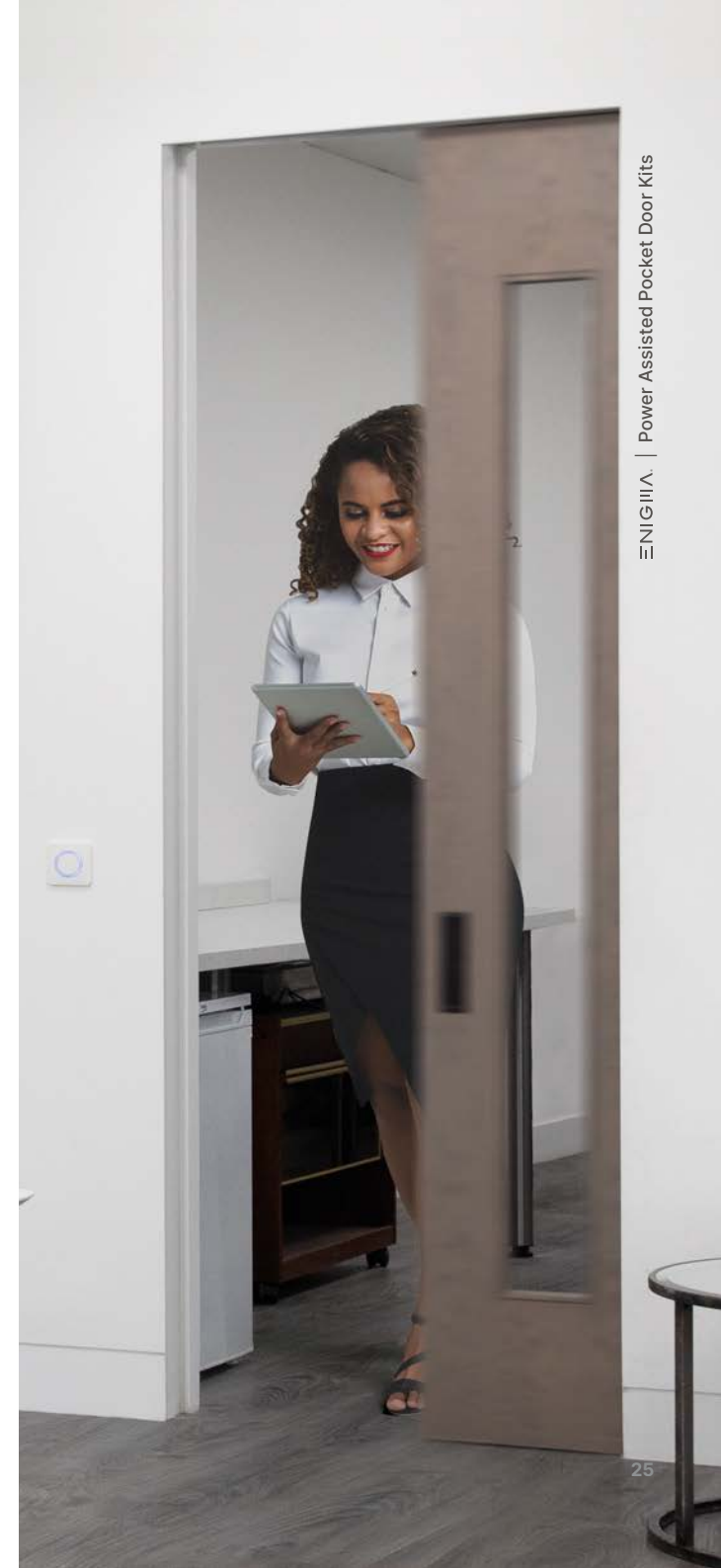


Flush Ironmongery



Touchless Sensor

\*Image shown for illustration purposes only. Actual configuration varies.



## Pocket Door Kits

# Glazed Metal Leaf *Fenestra*<sup>®</sup>

**A touch of glass! Aluminium framed glazed pocket doors are an elegant, effective way of making an interior design statement.**

A luxury upgrade for high end residential applications, beautifully engineered for architects, designers and end users. Each door leaf is custom made to your specification.



### Configurations

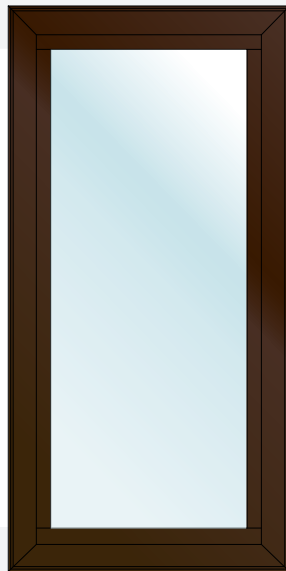
Fenestra is built to your individual project requirements in a range of different design styles.



Scan QR to view more  
[enigmapocketdoors.com/glazed-metal-leaf](https://enigmapocketdoors.com/glazed-metal-leaf)

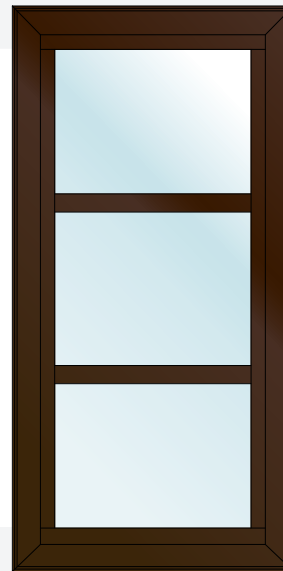
### *Fenestra*<sup>®</sup> Framed Glass

6-8mm thick glass enclosed within a aluminium frame for the ultimate 'Picture-frame' feature pocket door.



### *Fenestra*<sup>®</sup> Ladder Design

Horizontal bars integrated within the door frame break-up the glazing to create a subtle Art-Deco design style.



### *Fenestra*<sup>®</sup> Glazing & Infill

Completely customisable the door can combine glazing, horizontal and vertical bars as well as infill panels.



## Performance

Sustainably sourced timber parts.  
System tested to over 100k cycles.  
Supports doors up to 140kg.



100k Cycle Load  
Tested



Supports up to  
140kg Doors

## Door Leaf Configurations

Available as a single (opening from left or right) or double-leaf configurations to suit your specific requirements.



Single or  
Double Leaf

### Frame Types

Configurations shown  
can be customised to  
suit your project.



Framed  
Glass



Ladder  
Design



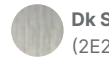
Glazing  
& Infill

## Door Leaf Frame Finishes

Powdercoated or anodised to your specification. If the finish you require isn't listed please talk to our design team to discuss bespoke options.



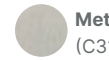
Silver Brushed  
(E2)



Dk Silver Brushed  
(2E2)



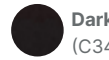
Metallic Gold  
(C23)



Metallic Silver  
(C31)



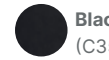
Bronze  
(C33)



Dark Brown  
(C34)



Metallic Grey  
(C32)



Black  
(C35)

## Infill Options

A range of infill options including several glass configurations enabling you to retain light and privacy.



Clear  
Glass



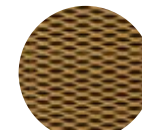
Opaque  
Glass



Reeded  
Glass



Mirrored  
Glass

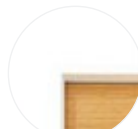


Mesh  
Panel

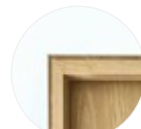
## Frame/Trim Options

Choose a trim to suit your individual interior design style.

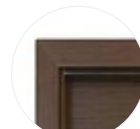
See p32



Concealed  
Frame



Shadow-Gap  
Frame

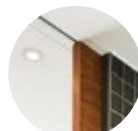


Visible  
Trim

## Optional Enhancements

System options and enhancements to optimise functionality and enhance the user experience.

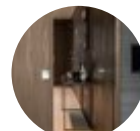
See p34



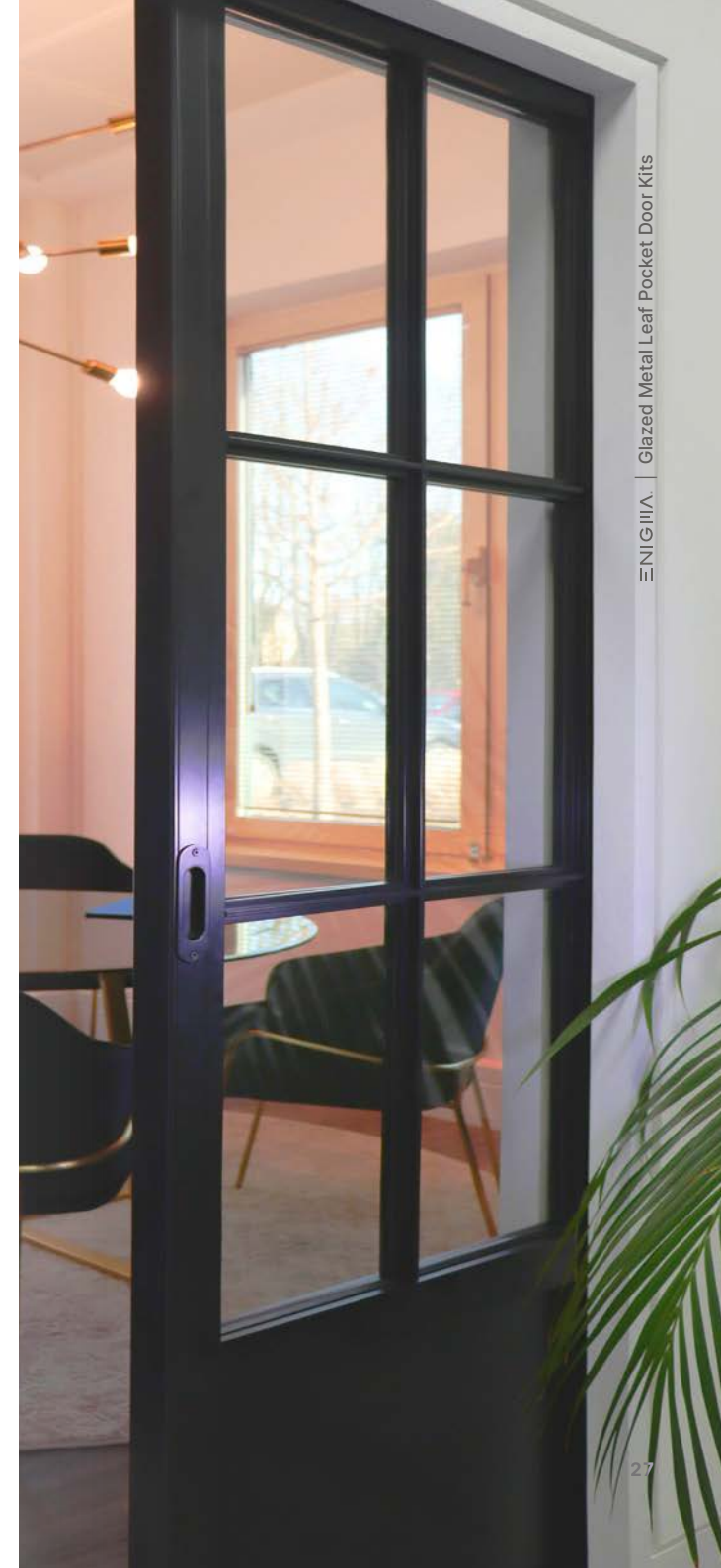
Full Height  
(Flush)



Self-supporting  
Head



Perpendicular  
Wall

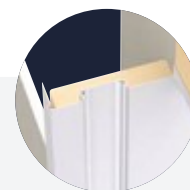


## Pocket Door Kits

# Telescopic

The telescopic opening feature enables two door leaves to slide into a single pocket, allowing you to create double-door spans within the footprint of a single door.

The perfect solution to provide wide-access without the constraints of neighbouring walls or the inconvenience of traditional double doors.



Telescopic Kit Illustrations  
Concealed Frame & Strike Jamb

### Configurations

Designed to suit a range of opening sizes, simply cut-to-size to suit your exact opening.



Scan QR to view more  
[enigmapocketdoors.com/telescopic](http://enigmapocketdoors.com/telescopic)

Leaf Width	Leaf Height	Leaf(s)	Concealed Frame Kit		Visible Trim Kit		Concealed Frame Kit		Shadow-Gap Kit		Visible Kit	
			Kit Part	No. of Plasterboard Layers Required	Kit Part	No. of Plasterboard Layers Required	Kit Part	No. of Plasterboard Layers Required	Kit Part	No. of Plasterboard Layers Required	Kit Part	No. of Plasterboard Layers Required
600mm to 926mm	Up to 2095mm	Single	SEL-PRT-10300	1	SEL-PRT-10292	1	SEL-PRT-10324	2	SEL-PRT-10308	2	SEL-PRT-10316	2
		Double	SEL-PRT-10304	1	SEL-PRT-10296	1	SEL-PRT-10328	2	SEL-PRT-10312	2	SEL-PRT-10320	2
	Up to 2815mm	Single	SEL-PRT-10302	1	SEL-PRT-10294	1	SEL-PRT-10326	2	SEL-PRT-10310	2	SEL-PRT-10318	2
		Double	SEL-PRT-10306	1	SEL-PRT-10298	1	SEL-PRT-10330	2	SEL-PRT-10314	2	SEL-PRT-10322	2
927mm to 1300mm	Up to 2095mm	Single	SEL-PRT-10301	1	SEL-PRT-10293	1	SEL-PRT-10325	2	SEL-PRT-10309	2	SEL-PRT-10317	2
		Double	SEL-PRT-10305	1	SEL-PRT-10297	1	SEL-PRT-10329	2	SEL-PRT-10313	2	SEL-PRT-10321	2
	Up to 2815mm	Single	SEL-PRT-10303	1	SEL-PRT-10295	1	SEL-PRT-10327	2	SEL-PRT-10311	2	SEL-PRT-10319	2
		Double	SEL-PRT-10307	1	SEL-PRT-10299	1	SEL-PRT-10331	2	SEL-PRT-10315	2	SEL-PRT-10323	2

## Performance

Sustainably sourced timber parts.  
System tested to over 100k cycles.  
Supports doors up to 140kg.



100k Cycle Load Tested



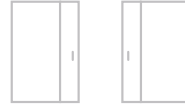
Supports up to 140kg Doors

## Door Leaf Configurations

Available as a single (opening from left or right) or double-leaf configurations to suit your specific requirements.



Single (x2 Leaves)



Double (x4 Leaves)

## Door Leaf Options

Solid timber core with hardwood lippings finished to your specification.

*See p33*



Laminated (Timber)



Painted (Timber)

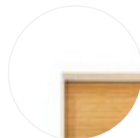


Veneered (Timber)

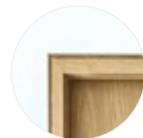
## Frame/Trim Options

Choose a trim to suit your individual interior design style.

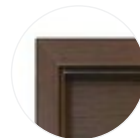
*See p32*



Concealed Frame



Shadow-Gap Frame



Visible Trim

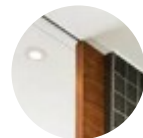
## Optional Enhancements

Customise your chosen pocket door system with a range of additional system options and enhancements to ease installation, optimise functionality and enhance the user experience.

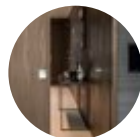
*See p34*



Pre-assembled Rapid Install



Full Height\* (Flush)



Perpendicular Wall



Flush Ironmongery Including Lock options

\*Image shown for illustration purposes only. Actual configuration varies.

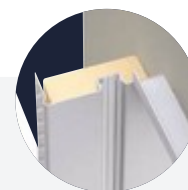


## Pocket Door Kits

# Glass Leaf

For the ultimate frameless finish, the Enigma system can be provided with a glass leaf enabling you to retain light and control privacy.

When using a glass leaf the opening width of the jambs are reduced to suit the thinner door. Specially designed glass clamps are provided with the sliding gear.



Glass Leaf Kit Illustrations  
Concealed Frame & Strike Jamb

### Configurations

Designed to suit a range of opening sizes, simply cut-to-size to suit your exact opening.



Scan QR to view more  
[enigmapocketdoors.com/glass-leaf](https://enigmapocketdoors.com/glass-leaf)

Leaf Width	Leaf Height	Leaf(s)	Concealed Frame Kit		Shadow-Gap Kit		Visible Trim Kit				
600mm to 926mm	Up to 2130mm	Single	SEL-PRT-10198	No. of Plasterboard Layers Required	1	SEL-PRT-10228	No. of Plasterboard Layers Required	2	SEL-PRT-10144	No. of Plasterboard Layers Required	1
		Double	SEL-PRT-10202		1	SEL-PRT-10232		2	SEL-PRT-10148		1
	Up to 2850mm	Single	SEL-PRT-10200		1	SEL-PRT-10230		2	SEL-PRT-10146		1
		Double	SEL-PRT-10204		1	SEL-PRT-10234		2	SEL-PRT-10150		1
927mm to 1220mm	Up to 2130mm	Single	SEL-PRT-10199	No. of Plasterboard Layers Required	1	SEL-PRT-10229	No. of Plasterboard Layers Required	2	SEL-PRT-10145	No. of Plasterboard Layers Required	1
		Double	SEL-PRT-10203		1	SEL-PRT-10233		2	SEL-PRT-10149		1
	Up to 2850mm	Single	SEL-PRT-10201		1	SEL-PRT-10231		2	SEL-PRT-10147		1
		Double	SEL-PRT-10205		1	SEL-PRT-10235		2	SEL-PRT-10151		1

## Performance

Sustainably sourced timber parts.  
System tested to over 100k cycles.  
Supports doors up to 140kg.



100k Cycle Load Tested



Supports up to 80kg Doors

## Door Leaf Configurations

Available as a single (opening from left or right) or double-leaf configurations to suit your specific requirements.



Single Leaf



Double Leaf

## Door Leaf Options

The 10mm thick glass door leaf is available in either clear or opaque glass to suit individual applications.

See p33



Clear Glass

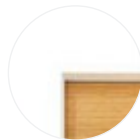


Opaque Glass

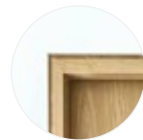
## Frame/Trim Options

Choose a trim to suit your individual interior design style.

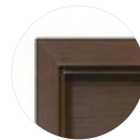
See p32



Concealed Frame



Shadow-Gap Frame



Visible Trim

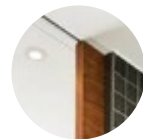
## Optional Enhancements

Customise your chosen pocket door system with a range of additional system options and enhancements to ease installation, optimise functionality and enhance the user experience.

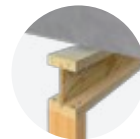
See p34



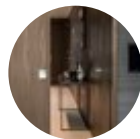
Pre-assembled Rapid Install



Full Height\* (Flush)



Self-supporting Head



Perpendicular Wall



Soft Close/Open Dampener



Simultaneous Open Double-leaf only

\*Image shown for illustration purposes only. Actual configuration varies.



## Technical Details

Enigma Pocket Doors

# Trim options to suit your interior design



### Concealed Frame

Enhance your contemporary interior with a minimalist design and seamless aesthetics.



### Shadow-gap Frame

Creating clean, minimalist lines, Shadow Gap adds a subtle, unique feature to the room.



### Visible Trim

An elegant, traditional look, Visible Trim Enigma is for use with architraves.



## Technical Details

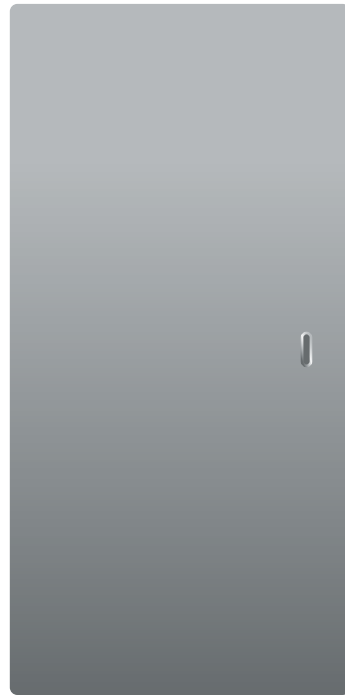
Enigma Pocket Doors

# Door Leaf options



### Laminated Timber

Solid timber core with hardwood lippings on all 4 sides with a tough laminate coating for added durability.



### Painted Timber

Solid timber core with hardwood lippings on all 4 sides, painted to a RAL colour of your choice.



### Veneered Timber

Solid timber core with hardwood lippings on all 4 sides, veneered in your choice of timber.



### Glass

Glass leaf for enhanced light and style. Choose from clear or obscured/privacy glass.

## Technical Details

Enigma Pocket Doors

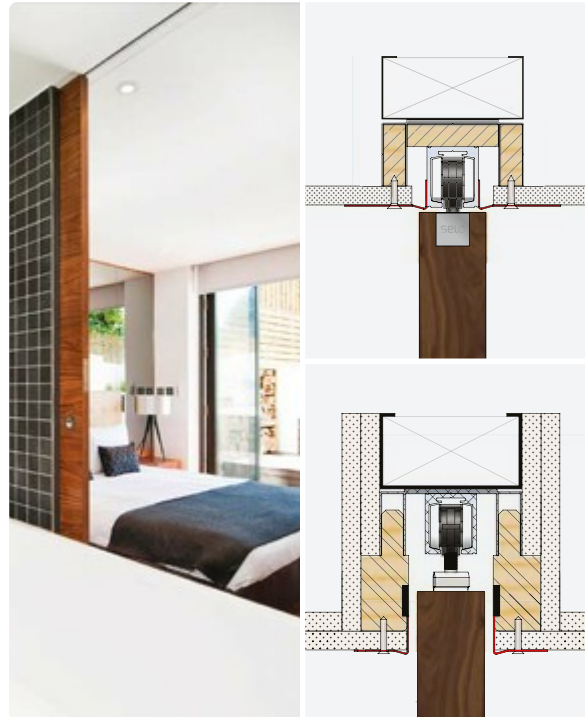
# Optional enhancements elevating user experience



### Soft Close/Open

The redesigned mechanism allows the unit to be serviceable once installed and also retrofitted for complete flexibility. The aluminium body houses a hydraulic, self-lubricating damper with acetal running gear. Integrating caged needle bearings, designed for oscillating movement, making it both durable and maintenance-free!

- ✓ 100k cycle tested (at full-load)
- ✓ Simple to install and retro-fit
- ✓ Supports up to 120kg
- ✓ No maximum door width



### Full Height Flush Head Kit

Full height, floor to ceiling Enigma doors give the ultimate open and spacious feel. Available in both non fire rated and EI30 configurations.



### Self-supporting Head Kit

For situations where fit the head of the pocket door kit won't fit directly to the ceilings, or floor slab and deflection tolerance is required. Enables the head to be fitted either end and support up to 120kg.



## Pre-assembled Kit

Revolutionising installation convenience with pre-assembled kits tailored to seamlessly fit your structural openings.



## Perpendicular Wall

Used for applications where a door closes against a flat wall; the perpendicular wall jamb profile is provided.



## Self-close

The closer is provided with infinite adjustment providing an extremely user friendly experience. Suitable for doors up to 900mm wide.

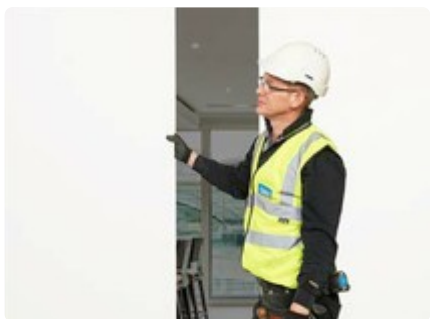
Order Code  
SEL-PRT-00923



## Touch Latch

130N touch latch allows you to completely conceal the door leaf within the cavity and removes the need for a finger pull.

Order Code  
SEL-PRT-00619



## Simultaneous Opening

Open both doors while only operating one leaf.

Order Code  
SEL-PRT-00924



## Handles (Flush-fit)

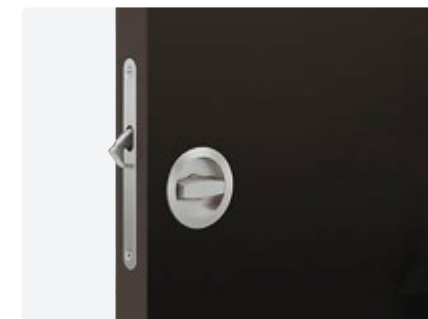
Complimentary ironmongery manufactured in satin stainless steel. Should a specific finish be required the leaf can be provided without cut-outs.

**Rectangular  
Flush Pull Set**  
Order Code  
SEL-PRT-01592

**Square  
Flush Pull Set**  
Order Code  
SEL-PRT-01593

**Oval  
Flush Pull Set**  
Order Code  
SEL-PRT-01594

**Circular  
Flush Pull Set**  
Order Code  
SEL-PRT-01595



## Locks (Flush-fit)

Privacy locks with integral thumb turn, handle and emergency coin release.

**Non Fire Rated  
Sliding Door Lock**  
Order Code  
SEL-PRT-00290

**Fire Rated  
Sliding Door Lock**  
Order Code  
SEL-PRT-01604

## Showroom

London WC1E 7BT

# A space for **Architects,** **Designers and Contractors** to share and enjoy

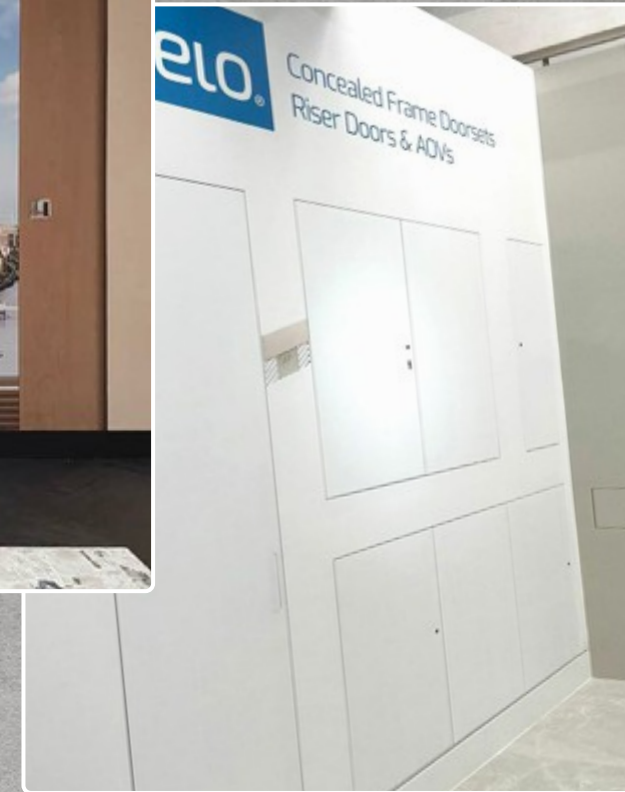
Our Hub is located within the Building Centre, Bloomsbury. The centre showcases the best in materials and manufacturing alongside the work of leading architects and designers to inform and inspire.



To book a meeting please email [showroom@selo-uk.com](mailto:showroom@selo-uk.com)  
#SeloLondonHub 26 Store Street London WC1E 7BT



Scan QR to view more  
[selo.global/londonhub](https://selo.global/londonhub)





# Complimentary training for both **specifiers** and **installers**

## TRAINING & CERTIFICATION

Selo Academy has been designed to create an immersive and engaging environment for specifiers and installers at all stages of their career.

Practical training is provided by our product technicians. We join you on-site to complete a real-world installation demonstration.

### How the Training Day is structured:



#### Technical & Theory

Harry Purdom starts the day with a theory-based educational session covering the product features to assist with installation and the different applications to ensure compliance.



#### Practical Installation

Installation training with a fitting demonstration from our site technician, then installing the doors under observation. Featuring technical tips and tricks to ensure a compliant and simple installation.



#### Common Mistakes

Lessons learned session. All featured from Enigma's vast experience with pocket doors on site – what to look out for and what to be aware of.



Scan QR to view more  
[enigmapocketdoors.com/installer-training](https://enigmapocketdoors.com/installer-training)

# Building. Better.

## Support

Surrounding your project

halo  
assist

## Project assistance **at every stage**

**call** 020 3880 0339 **email** [support@enigmapocketdoors.com](mailto:support@enigmapocketdoors.com)



### STAGE #1

#### Concept

Our engagement at the initial concept stage helps to ensure that design aspirations can be achieved and compliance requirements fulfilled.



### STAGE #2

#### Specification

Providing in-depth support in clarifying the project specification, securing all necessary compliance certification and if required, conducting site visits.



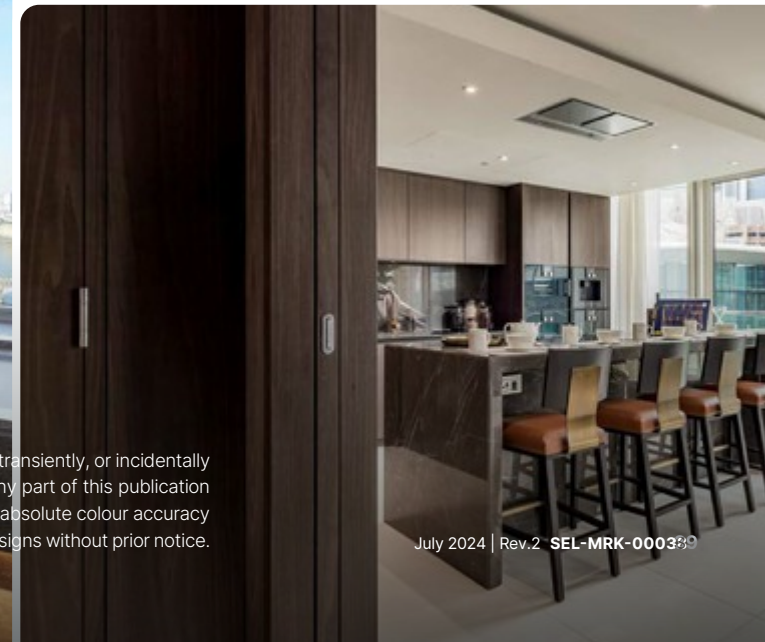
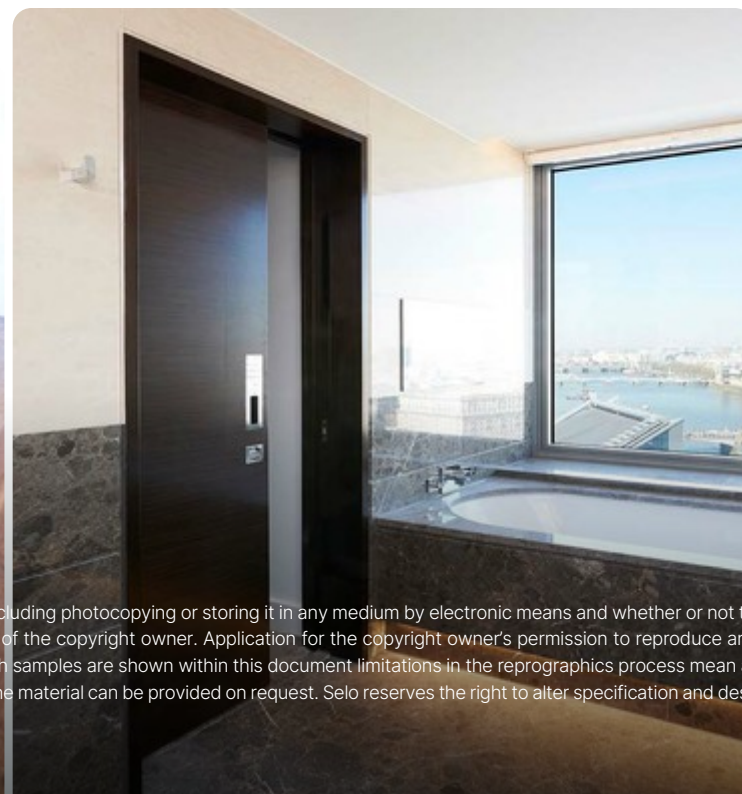
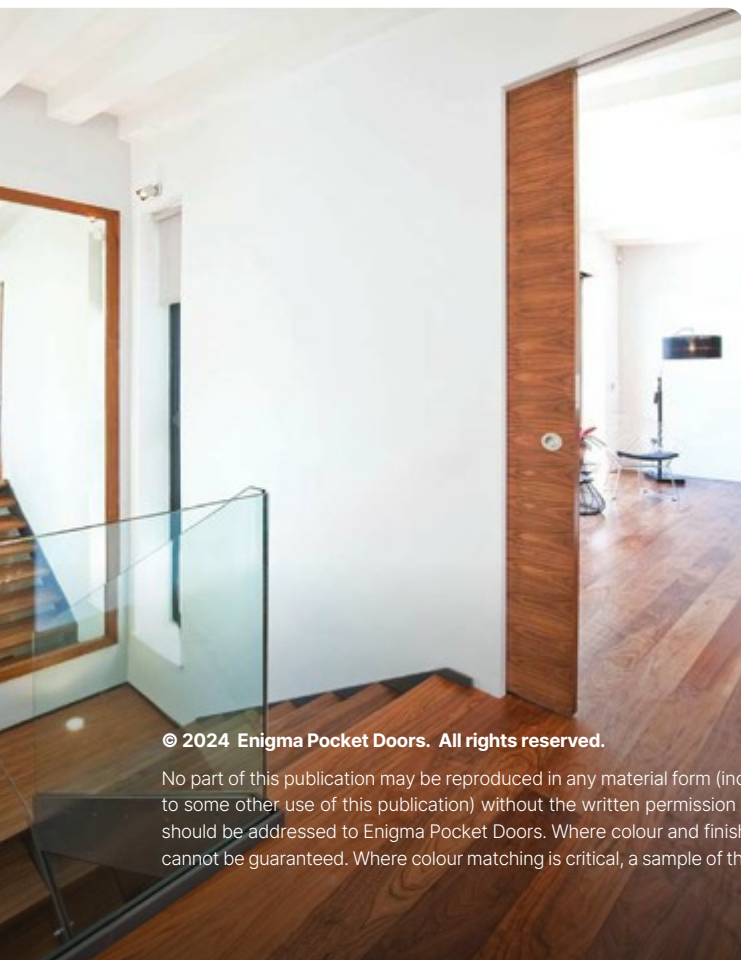
### STAGE #3

#### Execution

As soon as a confirmed order is placed we assign a dedicated Project Manager. We will come to site and go through the schedule, provide an install demo, and conduct a compliance review.



Scan QR to find out more  
[enigmapocketdoors.com/project-assistance](https://enigmapocketdoors.com/project-assistance)



© 2024 Enigma Pocket Doors. All rights reserved.

No part of this publication may be reproduced in any material form (including photocopying or storing it in any medium by electronic means and whether or not transiently, or incidentally to some other use of this publication) without the written permission of the copyright owner. Application for the copyright owner's permission to reproduce any part of this publication should be addressed to Enigma Pocket Doors. Where colour and finish samples are shown within this document limitations in the reprographics process mean absolute colour accuracy cannot be guaranteed. Where colour matching is critical, a sample of the material can be provided on request. Selo reserves the right to alter specification and designs without prior notice.

July 2024 | Rev.2 SEL-MRK-0003

## Contact

Support

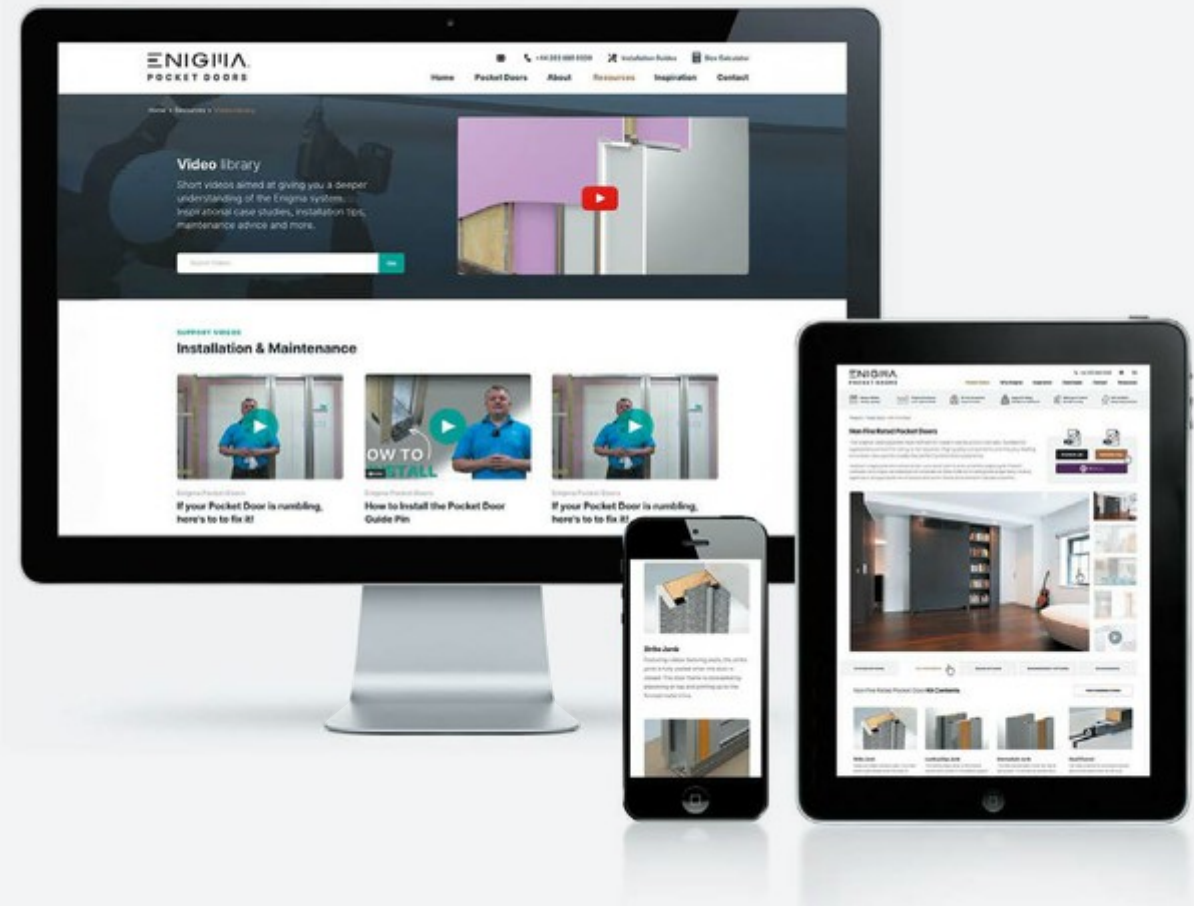
Our **support** goes above and beyond, like no other.

call **020 3880 0339**

email [info@enigmapocketdoors.com](mailto:info@enigmapocketdoors.com)



Visit our website for support  
[enigmapocketdoors.com/project-assistance](http://enigmapocketdoors.com/project-assistance)



**ENIGMA**  
POCKET DOORS

Selo K2 Kents Hill Business Park  
Timbold Drive Milton Keynes MK7 6BZ

[www.enigmapocketdoors.com](http://www.enigmapocketdoors.com)

